



Seamlessly complement your home's exterior.

Polaris Soffit is made of impact resistant vinyl and features a positive locking system, for simple installation and years of homeowner satisfaction.

- Beautiful colors in a low luster matte finish
- Full range of ventilation configurations
- Panel design engineered for rigidity and sag-free performance
- All Polaris panels are backed with a limited lifetime warranty

Available Colors:



+ Warranted for soffit use only
Color representation may vary from actual product color.

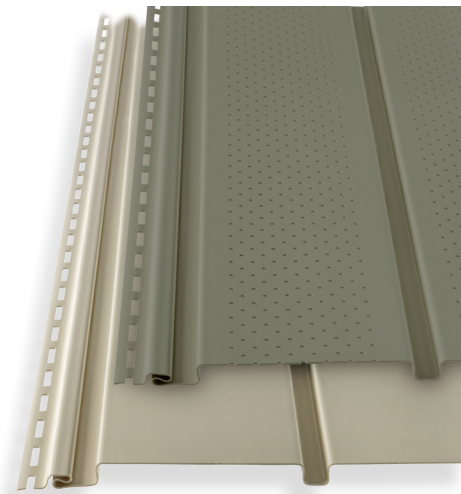


Available Profiles:

- 10" Double 5: Full vent vinyl soffit
- 10" Double 5: Solid vinyl soffit
- 10" Double 5: Hidden vent soffit

Also Available In:

- 12" Triple 4: Solid vinyl soffit
- 12" Triple 4: Center vent vinyl soffit
- 12" Triple 4: Full vent vinyl soffit
- 12" Triple 4: Hidden vent soffit



WeatherTech vinyl Siding

Durability. Appearance. Performance.



Curb appeal beyond words

Regarded as one of the highest quality vinyl siding products sold around the world; all WeatherTech siding products are made with patented tri-extrusion technology. WeatherTech vinyl siding offers diverse combinations of rich colors and deep-etched woodgrain patterns. Choose from our vast selection of the highest-end vinyl siding styles and achieve the stunning and stylish curb appeal you have always envisioned.



WeatherTech meets the challenge.

Polaris® offers their customers innovative options with an extensive line of beautiful, high- performance products. Only the best products that meet and exceed the needs of today’s homeowners for style, durability and carefree enjoyment are considered. Through every interaction, we also strive to build lasting partnerships with our customers.

WeatherTech meets the challenge and provides a great product that will impress any home owner - and their neighbors!



WeatherTech vinyl Siding

Durability. Appearance. Performance.

Style:

- Rich, cedar embossed woodgrain finish
- A full range of rich, classic color options

Performance:

- Reinforced nail-hem withstands gale-force winds
- Positive locking system for ease of installation
- Enhanced .044 thickness and strength ensures panels remain straight and true
- Resists dents, hail damage, scratches and fading

Maintenance:

- Limited Lifetime Warranty
- Easy-care convenience, never needs painting

Quality:

- Tri-Extrusion technology assures consistent high-quality siding with unmatched beauty and durability
- Meets or exceeds industry standards for ASTM D3679
- Meets VSI Standards

Environment:

- Recycled PVC-blend core
- 100% recyclable
- NGBS Green Approved Product

Production:

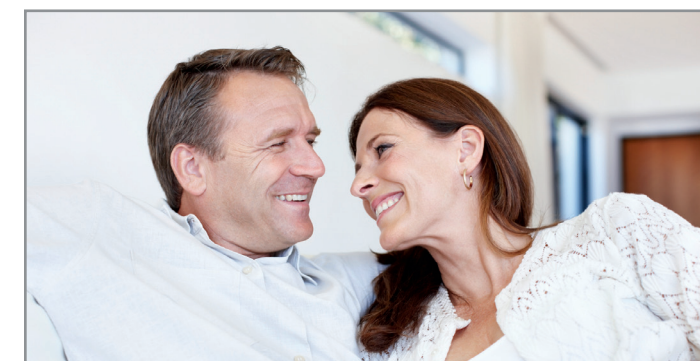
- Made in the U.S.A.



Color Palette

| | | | | |
|------------------|-----------------|--------------------|-----------------|------------------|
| | | | | |
| White Birch 02 | Classic Sand 11 | Warm Sandalwood 17 | Sunny Maize 22 | Summer Wheat 26 |
| | | | | |
| Soft Willow 41 | Pebble Clay 43 | Harbor Stone 44 | Basket Beige 46 | Slate Blue 47 |
| | | | | |
| Graphite Grey 49 | Java 52 | Artisan Clay 61 | Seagrass 79 | Twilight 80 |
| | | | | |
| Meadow 82 | Keystone 85 | Nutmeg 86 | | |
| | | | | Paramount Colors |
| Canyon Brown 81 | Heritage Red 87 | Hampton Blue 89 | Gray Flannel 90 | |

Color representation may vary from actual product color.

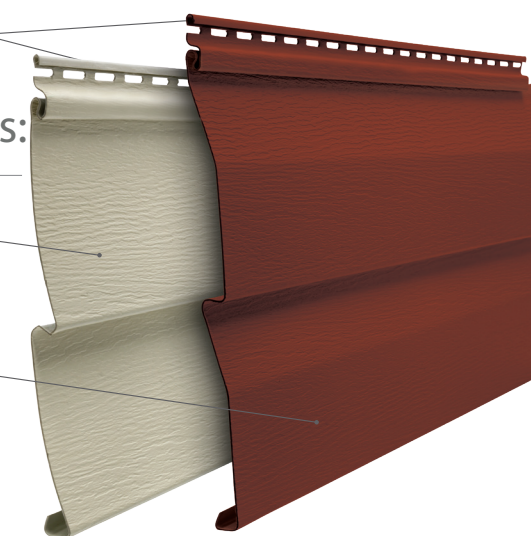


Reinforced Nail Hem

Available Profiles:

Double 4

Dutchlap 4 & Dutchlap 5



WeatherTech vinyl Siding